



PUSH-UP VOLUME
& CURVES



MAKE-UP RESULT

LASH QUEEN
SEXY BLACKS WP
M A S C A R A

LASH QUEEN
SEXY BLACKS WP
M A S C A R A

- PUSH-UP VOLUME
- PROVOCATIVE
CURVES

- COATING VOLUME
- CURVES
- SEPARATION

WP coating formula
= Instant volume
& curves

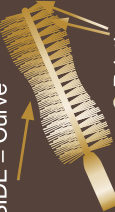


- Thickening lash by lash
- Sets the curve
- Weightless



Separation

③ Bristles =



② "90-60-90" SIDE = Curve



① FLAT SIDE = Volume

06-09-06 HSNRB

A UNIQUE
BRUSH/FORMULA DUO

BRUSH 90-60-90

① **FLAT SIDE:**

Coated Volume

② "90-60-90" SIDE:

Curve

③ **BRISTLE SLANTED**

TOWARDS THE LEFT:

Elegant separation

COATING FORMULA

- Corseting effect
- Thickening lash-by-lash coating
- Holds and sets the lash curve
- Supple and elegant (weightless)
- WP ingredient

Apply LASH QUEEN SEXY BLACKS WP from the roots to the tips

APPLICATION

APPLICATION

- 1 Curl and coat the center of the fringe.
Flat + 90-60-90 side



- 2 Curl the inner and outer corner





UNPRECEDENTED JEWEL-DESIGN



Lace detailing design
inspired by Calais
lacework

For the 1st time 3D
lace detailing decor
Sensuality of a velvet
touch

LASH QUEEN SEXY BLACKS WP M A S C A R A

MAKE-UP RESULT

- Push-up volume
& curves

TECHNOLOGY

(A brush/formula duo)

- 90-60-90 Brush
= Volumes + Curves
+ Separation
- WP coating formula
= Coating + Sets the
curve + Suppleness

JEWEL DESIGN

- Unprecedented 3D
lace detailing
design